

Eumcooh

Always A Step Ahead



EBM-1000 / 2150 / 2600 / 3200

HORIZONTAL MILLING MACHINES

EMC / CE / ISO 9002 CERTIFIED

A PROFESSIONAL CNC MACHINES MANUFACTURER

Eumach

EBM-1000

- TABLE DIMENSION : 1500MM × 710MM
- X AXIS TRAVEL : 1400MM
- Y AXIS TRAVEL : 1200(1400)MM
- Z AXIS TRAVEL : 1000MM
- TABLE LOAD : 1500KG



● Rigid framework



EBM-1000
HORIZONTAL MACHINING
CENTER.

Eumach

EBM-2150

- **TABLE DIMENSION : 2200MM × 1220MM**
- **X AXIS TRAVEL : 2150MM**
- **Y AXIS TRAVEL : 1400MM**
- **Z AXIS TRAVEL : 1100MM**
- **TABLE LOAD : 4000KG**

- **4 boxways base, table is fully supported on the 4000mm length saddle.**

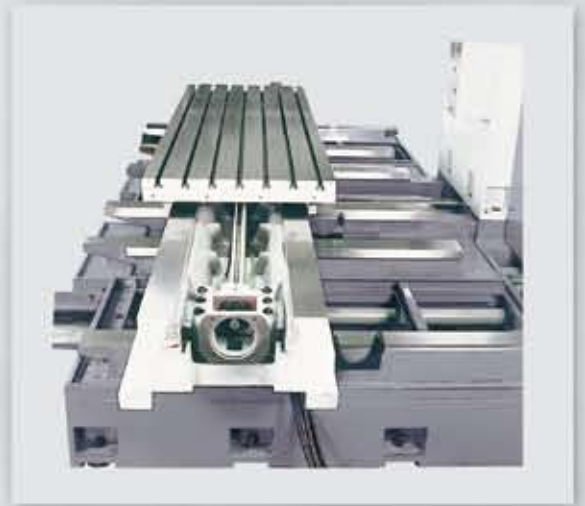


EBM-2150 HORIZONTAL MACHINING CENTER WITH 32 TOOLS AUTOMATIC TOOL CHANGER (HORIZONTAL CHANGING) AND FOLLOWING OPTIONS :
—1200MM X 1200MM INDEXING TABLE.
—FULL GUARD WITH ROOF.

Eumach

EBM-2600

- TABLE DIMENSION : 2650MM × 1220MM
- X AXIS TRAVEL : 2600MM
- Y AXIS TRAVEL : 1400MM
- Z AXIS TRAVEL : 1100MM
- TABLE LOAD : 4500KG



- 6 boxway base table is fully supported on the 4900mm(EBM-2600), 6100mm (EBM-3200) length saddle.



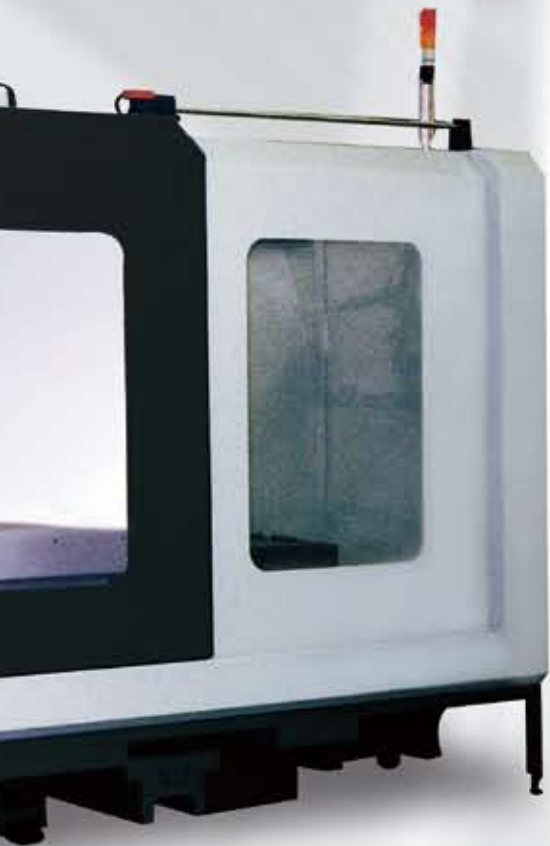
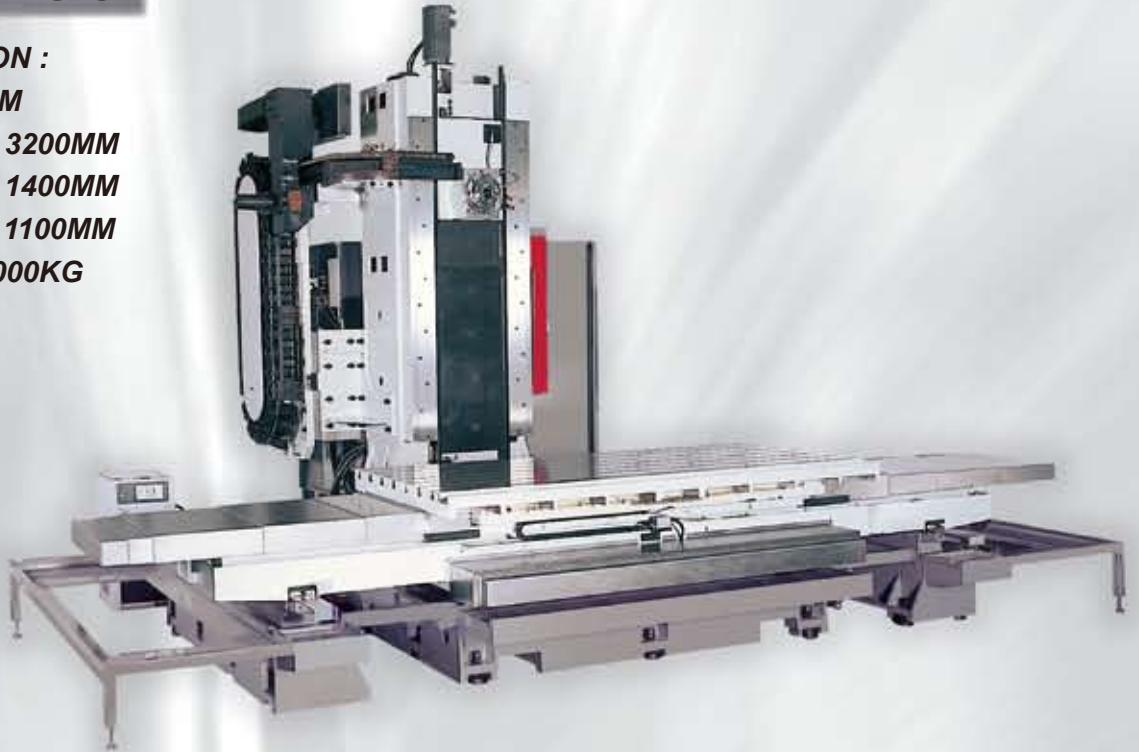
EBM-2600/3200 HORIZONTAL MACHINING CENTER WITH 32 TOOLS

Eumach

EBM-3200

- **TABLE DIMENSION :**
3250MM × 1220MM
- **X AXIS TRAVEL :** 3200MM
- **Y AXIS TRAVEL :** 1400MM
- **Z AXIS TRAVEL :** 1100MM
- **TABLE LOAD :** 5000KG

- *Designed to sustain all kinds of reaction forces of cutting motion with thick wall and diagonally arranged ribs; this absolutely minimizes changes in accuracy level of the machine.*

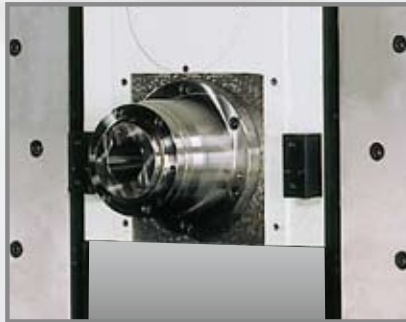


- *Extra wide interior space*

ATC HORIZONTAL CHANGING & FULL GUARD.

Various versatile options to

SPINDLE NOSE :



standard nose to column 250mm



optional long nose to column 350mm



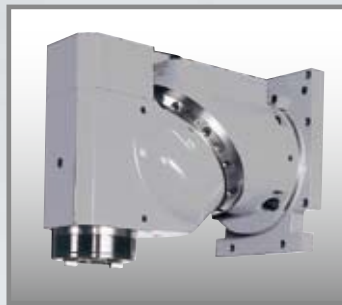
BT#50 / 1000RPM / 30kw / 350Nm / long nose motor spindle.

MILLING HEADS :

Attachment type, removable :



VAR3
manual rotation universal milling head BT#50 / 3000RPM

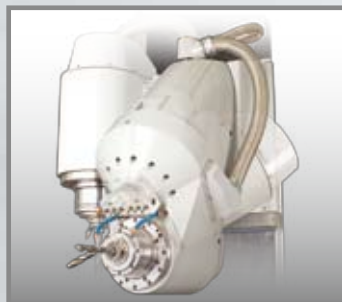


VH-2
automatic vertical & horizontal 2 positions, BT#50 / 3500RPM

Built in type, non-removable :



VH-2.5 & VH-1
automatic index 2.5° or 1° on two axis, BT#50 / 3500RPM



VH-U
universal type milling head, HSK-A63 / 29.3 & 35KW / 70 & 160Nm / 14000RPM

Exp



increase your productivity:

ATC :



40,60,90 stations fixed on floor, horizontal tool changer



24 stations fixed on traveling column, vertical tool change.

andable Features:



TABLE :

standard plain fixed table or following optional tables :



700 x 800mm CNC rotary table built in on EBM-1000



1200 x 1200mm CNC rotary table built in on EBM-2150



1 M rotary table on top of standard table

EBM with optional 5 axis features :

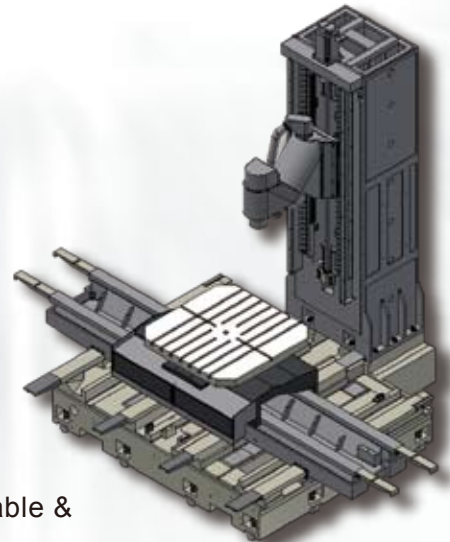
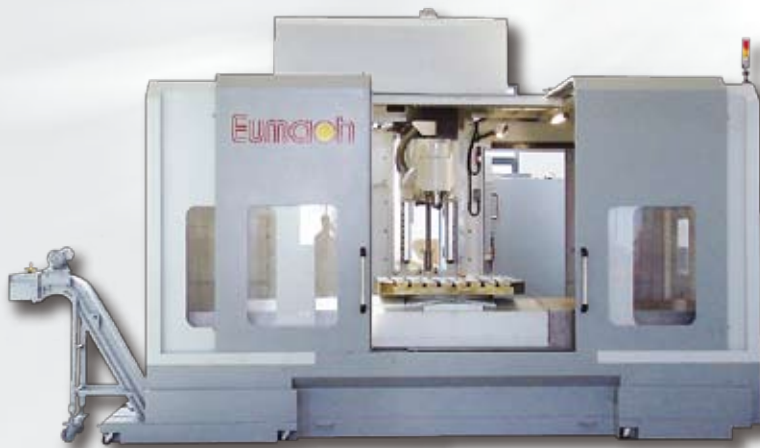


B axis swivel head at vertical position.



B axis swivel head at tilting angle position.

Large C Frame / Swivel Head + Rotary Table



2150mm x 1100mm x 1400mm travel, 1200x1200mm rotary table & swivel head, HSK-A63 18000RPM

MODEL	UNIT	EBM-1000	EBM-2150	EBM-2600	EBM-3200
TABLE:					
OVERALL SIZE	MM	1500 × 710	2200 × 1220	2650 × 1220	3250 × 1220
WORKING AREA	MM	1500 × 710	2200 × 1100	2650 × 1100	3250 × 1100
T SLOTS (SIZE×NO×PITCH)	MM	18×6×125	22×7×125	22×7×125	22×7×125
MAXIMUM LOADING	KG	1500	4000	4500	5000
TRAVEL:					
X / Y / Z AXIS	MM	1400/1200(1400)/1000	2150/1400/1100	2600/1400/1100	3250/1400/1100
DISTANCES:					
SPINDLE NOSE TO TABLE EDGE	MM	246.5-1246.5	-249-930	-249-930	-249-930
SPINDLE CENTER TO TABLE TOP	MM	250-1450(245-1645)	190-1590	190-1590	190-1590
SPINDLE NOSE TO COLUMN SURFACE	MM	250	249	249	249
FLOOR TO TABLE	MM	980	995	995	995
SPINDLE:					
TAPER	ISO	BT#50	BT#50	BT#50	BT#50
SPEED	RPM	4000(6000)	4000 (6000)	4000 (6000)	4000 (6000)
MOTOR	KW	15	15	15	15
AXIS MOTORS:					
X & Z AXIS	NM	22 / 22	27 / 27	27 / 50	70 / 70
Y AXIS	NM	22 WITH BRAKE	27 WITH BRAKE	27 WITH BRAKE	27 WITH BRAKE
CUTTING FEEDRATE	MM/MIN	1-5000	1-5000	1-5000	1-5000
RAPID FEEDRATE	M/MIN	10(15)	10(15)	10(15)	10(15)
MINIMUM SETTING	MM	0.001	0.001	0.001	0.001
AUTOMATIC TOOL CHANGER :					
TYPE OF ATC		SWING ARM	SWING ARM	SWING ARM	SWING ARM
NO.OF ATC	TOOLS	32 (40,60)	32 (40,60)	32 (40,60)	32 (40,60)
MAX.TOOL (DIA/LENGTH)	MM	250 / 300	250 / 300	250 / 300	250 / 300
MAX.TOOL WEIGHT	KG	15	15	15	15
TOOL TO TOOL	SEC.	3.5	3.5	3.5	3.5
BALLSCREWS ON X / Y / Z :					
DIAMETER	MM	50 / 50 / 50	63 / 50 / 63	63 / 50 / 63	63 / 50 / 63
PRECISION CLASS(C3)	MM/300MM	0.008	0.008	0.008	0.008
COOLANT & LUBRICATION :					
COOLANT MOTOR POWER	KW	0.86	0.86	0.86	0.86
COOLANT TANK VOLUMN	L	200	350	350	350
COOLANT MOTOR CAPACITY	L / MIN	20	20	20	20
LUBRICCATION MOTOR POWER	WATT	25	25	25	25
LUBRICATION TANK VOLUME	L	4	4	4	4
ACCURACY :					
POSITIONING	MM	JIS 6388 : ±0.005MM / 300MM VDI3441 : P0.014MM			
REPEATABILITY	MM	JIS 6388 : ±0.003MM VDI3441 : PS0.01MM			
ROUNDNESS	MM	JIS 6388 : ±0.01MM/300MM DIAMETER			
MISCELLANEOUS :					
MACHINE NET WEIGHT	KG	15000	21000	23000	25000
POWER REQUIRED	KVA	30	35	40	40
PNEUMATIC REQUIRED	KG / CM ²	7	7	7	7

() OPTIONS

STANDARD FEATURES & ACCESSORIES :

- | | |
|---|--------------------------------------|
| 1. PROGRAMMABLE COOLANT SYSTEM | 7. LEVELLING BOLTS & PADS |
| 2. AUTOMATIC LUBRICATION SYSTEM | 8. BT#50 SPINDLE |
| 3. SPINDLE AIR BLAST SYSTEM | 9. PRE-EXTENSIONED BALLSCREWS |
| 4. WORKING LAMP | 10. RS-232 TERMINAL INTERFACE PORT |
| 5. ALARM LAMP FOR ABNORMAL SITUATION | 11. MACHINE & CONTROL MANUALS |
| 6. INDICATION LAMP FOR DWELL & END OF JOB | 12. TOOLBOX WITH SPANNERS & WRENCHES |

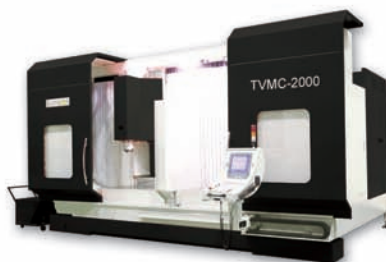
CNC CONTROLS AVAILABLE: FANUC, MITSUBISHI, HEIDENHAIN, SIEMENS



EUMACH FAMILIES



• **VMC-2150**
Vertical machine center
400MM ~ 3200MM X axis travel



• **TVMC-2000 / 3000**
Moving column machine center
2320MM & 3320MM X axis travel



• **LBM-1500**
High speed bridge type machine center
1100MM ~ 2200MM X axis travel



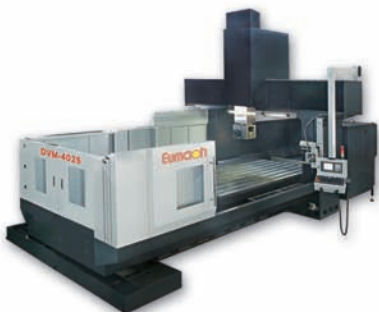
• **MH-500**
Horizontal machine center
720MM x 650MM x 650MM travel



• **FBM-10040**
5 Face machine center
1400MM ~ 3200MM X axis travel



• **MB-1500**
Moving column horizontal machine center
1100MM ~ 2200MM X axis travel



• **DVM-4025**
5 Face & double column machine center



• **FBE-1500**
Universal milling machine
1500MM ~ 4000MM X axis travel



• **UMC-1000**
5 Axis machine center
1000MM x 800MM x 700MM travel

Eumach Co.,LTD.

★ Specifications subject to change without notice.
Catalogue No.A404203

2, YING LIN LANE, HE-SHENG STREET, SHI-GANG DISTRICT, TAICHUNG CITY 422, TAIWAN, R.O.C.
TEL:886-4-25810031 FAX:886-4-25810003
E-mail:eumach.coltd@msa.hinet.net ; eumach@ms8.hinet.net
http://www.eumach.com

